

**bicon**<sup>®</sup>  
DENTAL IMPLANTS



**TRINIA**<sup>®</sup> EPC

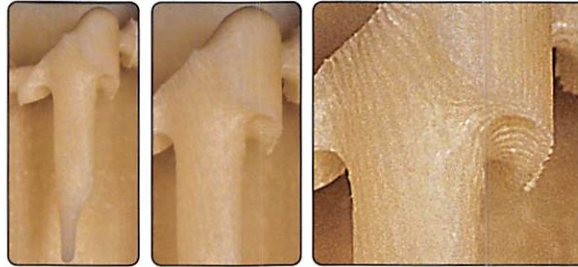


*“Designed for the digital fabrication of endodontic post and core restorations less than 15mm in length.”*

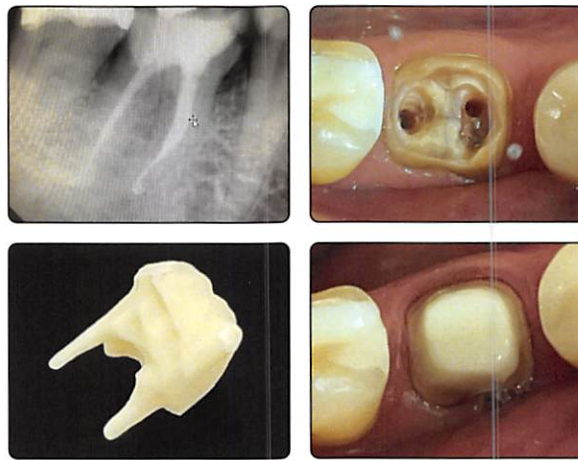
**TRINIA® EPC Blocks** differ from standard TRINIA® blocks only in the orientation of their fiber sheets. For maximum strength of the post and core, the post design must be parallel to the direction of the fibers. Since certain software programs cannot rotate the block, the overall length of the post and core will determine which TRINIA® block to use. Use a TRINIA® EPC block for endodontic post and core restorations under 15mm and a standard TRINIA® block for restorations over 15mm to ensure alignment with the block's fiber orientation.

*TRINIA® has a 43% higher fracture load than a prefabricated fiber reinforced composite post cemented in a thin root dentin and no ferrule scenario (Suzaki N. et al. Materials 2021, 14, 6199. <https://doi.org/10.3390/ma14206199>)*

**Proper Orientation of Fibers**



Note the orientation of the TRINIA® fibers comprising the post and core. For post and core designs less than 15mm in length, use TRINIA® EPC. Otherwise, use standard TRINIA® Blocks. *Images courtesy of Dr. Jonas Adrian Helmut Vogler, M.Sc • Gießen, Germany.*



**Highlights**

TRINIA® EPC is designed for the digital fabrication of endodontic post and core restorations less than 15mm in length.

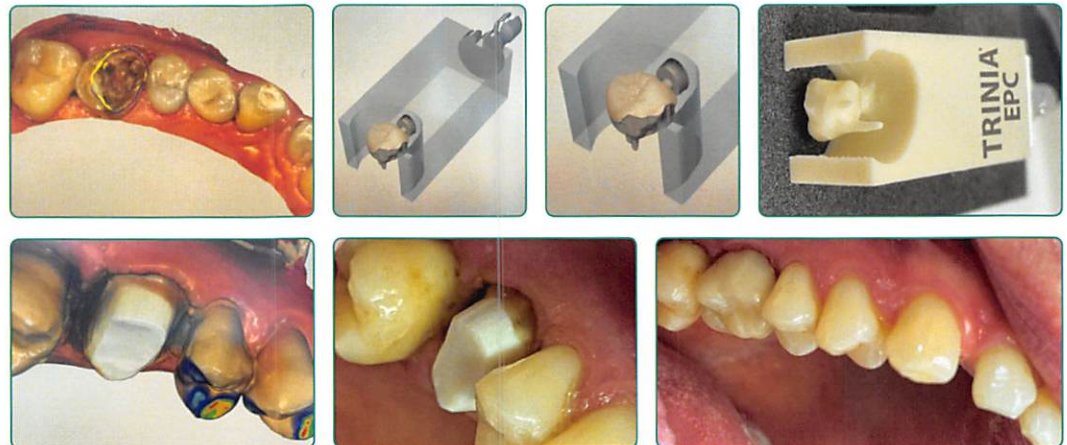
- Efficient and effective chairside digital fabrication of endodontic post and core restorations
- TRINIA® restorations have a similar modulus of elasticity to dentin
- The post and core restoration does not have an interface, since it is milled from one material
- If two restorations are milled together, eight post and core restorations can be milled from one block



*“Using TRINIA® EPC, I successfully completed a milled crown and post in just 1 hour and 45 minutes. The treatment began at 10:30am and the patient departed at 12:15pm. While milling, I even managed to uncover three implants in another operatory.*

*This truly represents the future of chairside dentistry!”*

— **Dr. Peter Chaloupka**  
Munich, Germany



Images courtesy of Dr. Peter Chaloupka • Munich, Germany

**TRINIA® EPC Blocks**

Part No.	Size	Color	Quantity
616-115	40 x 19 x 15mm	Ivory	2

For post and core designs less than 15mm in length.



**TRINIA® Blocks**

Part No.	Size	Color	Quantity
613-115	55 x 19 x 15mm	Ivory	2
614-115	40 x 19 x 15mm	Ivory	2

For post and core designs greater than 15mm in length.

